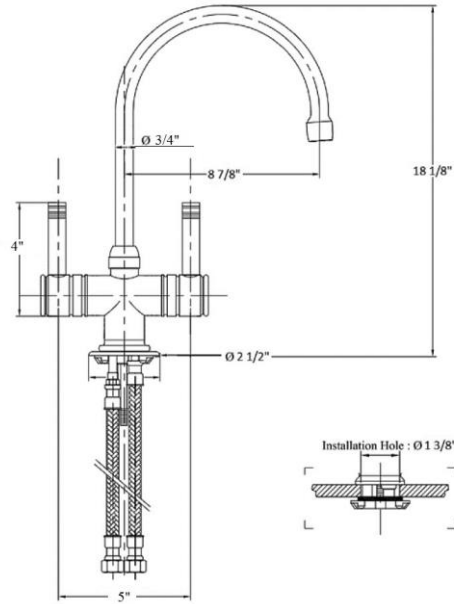


# 4210 – ‘Lille’ Single Hole Kitchen Mixer



## Technical Information

- IAPMO: NSF/ANSI 61, NSF/ANSI 372 & ASME A112.18.1/CSA B125.1 certified.
- New style metal handles.
- Requires 1 3/8" hole mounting.
- ¼ turn Flühs ceramic Ecobross cartridges.
- Maximum flow rate is 1.2 GPM with low flow restrictor.
- Available finishes are French Weathered Brass (**47**), Polished Chrome (**48**), SoliBrass (**49**), Lacquered Matte Black Nickel (**50**), Polished Brass (**55**), Polished Nickel (**56**), Brushed Nickel (**57**), Satin Nickel (**60**), Antique Lacquered Copper (**67**), Antique Lacquered Brass (**68**), Weathered Brass (**70**), Lacquered Polished Black Nickel (**71**) and Lacquered Polished Copper (**80**).
- Please See Cleaning Instructions:  
<http://herbeau.com/CleaningAll.pdf> For Finish Care and Maintenance Information.

Part #	Description
01	Lille Metal Handle
03	Escutcheon
04	Lille Spout
05	Lille Handle Base
06	Flat Rubber Washer
07	Nylon Clip
08	Rubber Horseshoe Washer
09	Locking Collar
10	Rubber O-Ring
11	Aerator Washer
12	Aerator Filter
13	Aerator Cover
14	Central Body
15	Rubber O-Ring
16	Spline Adapter
17	Rubber O-Ring
18	12" X 3/8" Flexible Supply Hose With O-Ring
18	Optional 30" X 3/8" Flexible Supply Hose With O-Ring
19	Rubber O-Ring
20	Threaded Stem
22	Brass Horseshoe
23	Brass Washer
24	Brass Nut
81	¼ Turn Ceramic Cartridge - Hot
82	¼ Turn Ceramic Cartridge - Cold

Please follow example when ordering parts for ‘Lille’ Kitchen Mixer

- To order part#1 – Lille Metal Handle

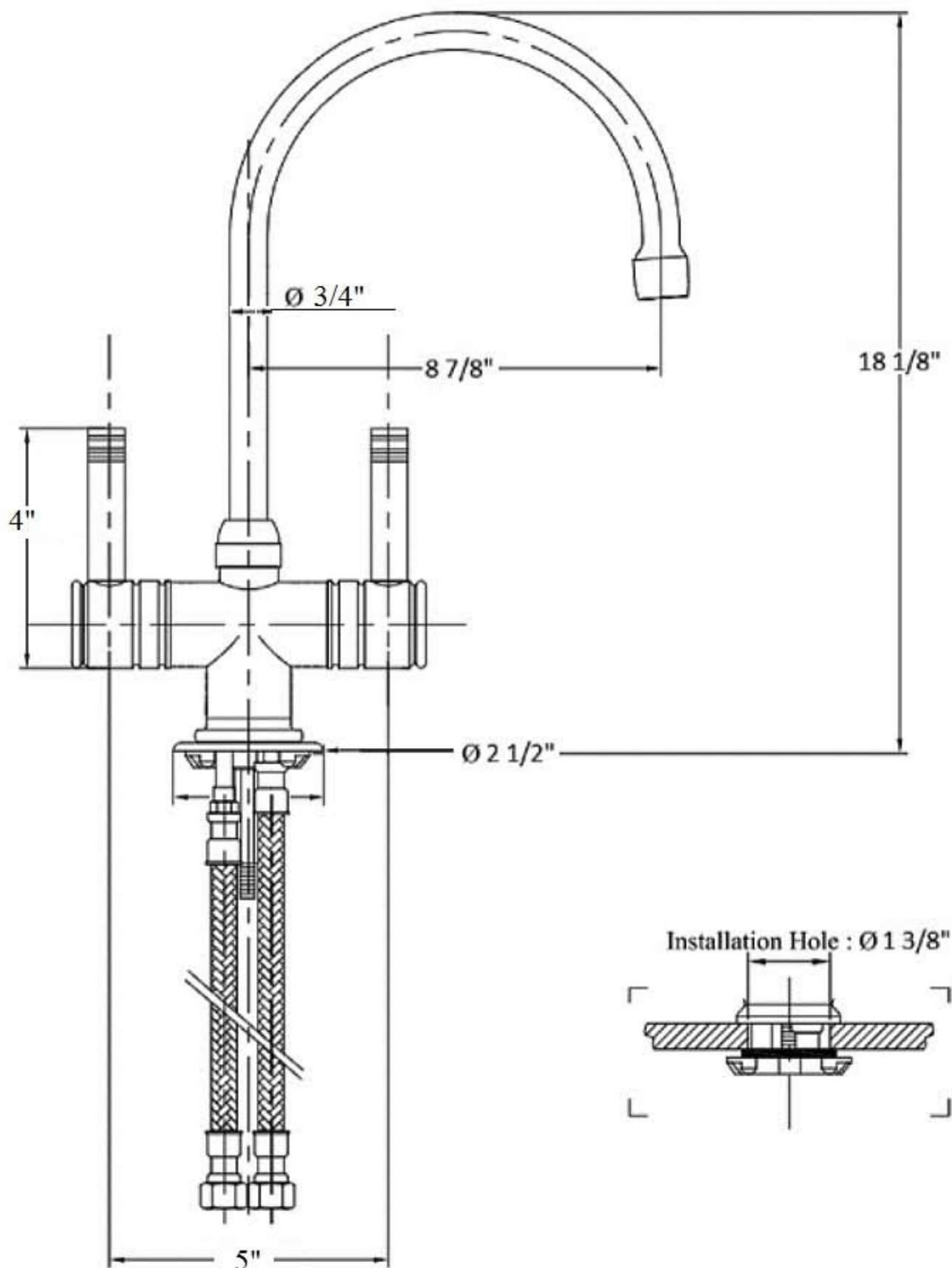
○ 950006xx

- Please substitute finish number needed in place of xx



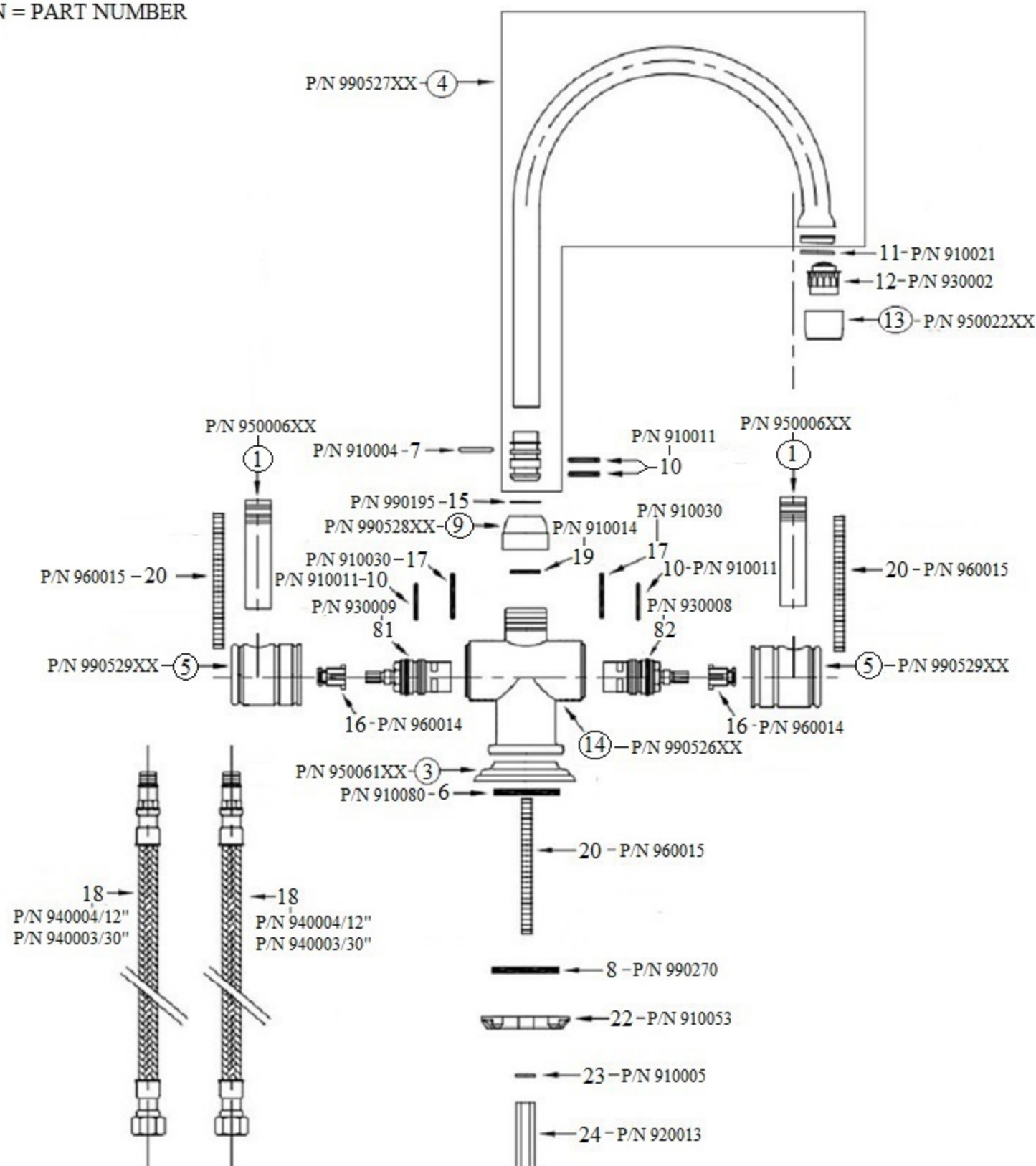
**Herbeau**  
L'Art du Sanitaire depuis 1857

# 4210 - 'Lille' Single Hole Kitchen Mixer



# 4210 - 'Lille' Single Hole Kitchen Mixer

\*P/N = PART NUMBER



○ = FINISHED PARTS

XX = TWO DIGIT FINISH CODE